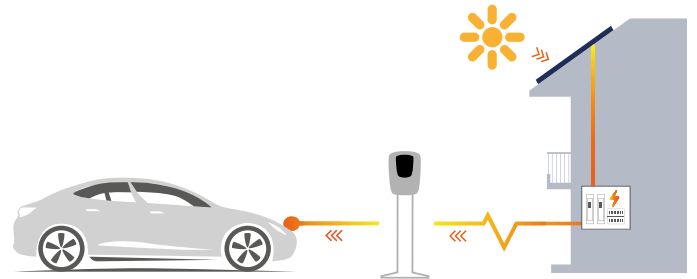




# tiny-11

## The most affordable plug&play AC charging station

The Tiny-11 is a modern wallbox that is safe and very easy to use. Thanks to the supplied mounting plate, it can also be installed quickly. It is suitable for private use in single and multi-family homes, as well as at the workplace or in customer and public car parks. The Tiny fully supports OCPP1.6 functions and meets all required technical safety standards.



The charging station can be connected to the Internet via an Ethernet cable (RJ45 socket is included as standard). Further connectivity, such as Wi-Fi, Bluetooth and 4G, is optional. Thus, the Tiny can also be connected to the sun2wheel load management – but only in a light version: it is regulated every 30 seconds. This is enough to optimise self-consumption using your own PV system. Billing services are also possible by these means.

Integrated cable for vehicle and mains

Simple plug&play installation

Self-consumption optimisation

Best price-performance ratio



Type 2  
plug



CEE 16A  
plug



## Easy installation

The Tiny can be installed easily thanks to a mounting plate that can be fixed to the wall with only 4 screws, and a CEE plug connection to the mains. The charging station can also be mounted on an optional standard base. At the vehicle end, a 7-meter cable with type 2 plug is integrated, which makes the charging station very convenient to use.

# Everything you need



## The V2X-controller essential

The entry-level load management «V2X-controller essential» from sun2wheel can be integrated into the control system. If loads controllable by sun2wheel are electrically interconnected, mixed systems with AC and DC incl. bidirectional charging stations can also be configured. The Tiny provides the control speed needed to optimise PV self-consumption. As an option, an RFID reader can also be activated: this allows selective access to the charging station. The Tiny has an elegant silver housing made of high-quality and insulating plastic, which is also suitable for operation outdoors.

## Display and LED

A colour display and LED indicators provide the necessary information about the current charging process (charged energy, charging capacity, charging time and charging status).

## Plug & Play

The Tiny can be easily connected to the mains via a three-phase CEE 16A socket. No further complex installation measures are necessary. No internet is required for simple operation, but it is required for power control and/or centralised billing.

Technical specifications		
Input network end	Input power plug	3x400V / 16A CEE, 3-phase 16A (IEC 60309-2), 50 Hz
Output vehicle end	Output current Output power Connector Cable length	3x400V / 6-16A 3.7 – 11 kW Type 2 5 m
Security input network end	Overvoltage and undervoltage protection Residual current device RCD Earth fault protection	
Safety output vehicle end	Overvoltage protection Overcurrent protection Residual current protectors Line protection switch Mode 3 communication (Control Pilot)	
Temperature range during operation		-30°C to +50°C
Dimensions	Width: 25cm; Height 35cm; Depth: 13cm	
Weight		5.5 kg
Housing		IP65 (for outdoor application we recommend mounting under existing roofing or with the optional protective cover).
Standards		CE IEC 61851-1, IEC 62196-2, IEC 61851-21-2

## Other advantages for the user

- ✓ Charging capacity up to 11 kW
- ✓ Wall and base mounting
- ✓ High quality anti-UV treatment of the housing with 3-year warranty
- ✓ Operating temperature from -30°C to +50°C
- ✓ Adjustable charging capacity via app or software platform (optional)
- ✓ OCPP1.6J
- ✓ Integrated DC-6 mA protection
- ✓ RFID reader (optional)
- ✓ Easy installation and maintenance
- ✓ IP65 and IK08
- ✓ 3-year manufacturer warranty



## V2X-controller

sun2wheel AG

+41 61 927 55 66

hello@sun2wheel.ch

sun2wheel.ch

## The sun2wheel product family

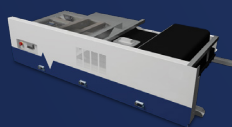
combines solar energy, electromobility and the electricity grid

The complete system for the intelligent use of vehicle batteries as energy storage - resource-saving and incrementally expandable; Swiss cutting-edge technology for sustainability!



### V2X-controller

All charging stations and rechargeable batteries are managed in a superordinate and intelligent way. The system can be expanded incrementally. The sun2wheel app makes the various functions controllable and tangible.



### accu, accu-rack & accu-container

The accu second use battery system (can also be ordered brand new) can be used as a single battery as well as a rack and container system. Capacity of 24-620 kWh.



### two-way-digital

With the inexpensive model of the bidirectional charging station, the two-way-digital, you can easily turn your car into a big powerbank at home.



### one-way-guest-64

One-way 64 or two-way 32 kW DC, including dynamic load sharing, allow easy and fast charging of all electric cars.



### one-way-compact-11

This AC premium charger is available in an 11 kW version. Easy installation with CEE plug.